



FIELD OF USE FOR 4th DIVISION PRODUCTS

LATIFLEX

FLEXIBLE ACRYLIC RESIN FOR CEMENT MIXES

PROBLEM

The problem associated with renovation and restoration, where different types of cement mortar are used are often concerned with bonding or adhesion to surfaces, perhaps because they are too smooth, or crumbling, or maybe just old and inconsistent. In addition there are structures which may be subjected to vibrations which in turn cause fissures in the mortar.

In these cases it is important to use a compound to encourage adhesion which makes the cement product more flexible and able to support and withstand any structural vibrations.

DESCRIPTION

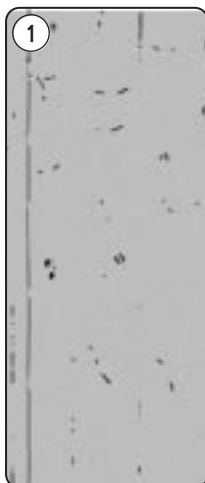
LATIFLEX is a modifier containing resins, dispersed in water, of a co-polymer of acrylic acid esters which produces mortars with flexibility and resistance characteristics superior to traditional types.

FIELDS OF USE

LATIFLEX is used to:

- improve cement mix characteristics for screeds, plasters, smoothing coats, rendering
- improve adhesion, waterproofing and flexibility of Osmoseal damp-proof cement.

Generally, it is ideal for use in all cases where surface adhesion could result difficult, on very smooth or



1. Concrete surface.



2. Old masonry

crumbling surfaces, or those subjected to vibrations and structural movement.

PRECAUTIONS

- Use LATIFLEX from 4°C to +40°C.
- Use general rules for mortar and concrete composition and application.
- Protect the product from frost.
- Do not use undiluted Latiflex as a primer or adhesion bridge.
- Wash tools with water after use.

SAFETY REGULATIONS

- Protect the hands with gloves and the eyes with goggles.
- Ventilate working area sufficiently.
- In case of contact with the eyes, wash thoroughly and immediately with water.
- Keep the product out of the reach of children.

METHOD OF USE

SUBSTRATE PREPARATION

Thoroughly clean the surface removing dirt, dust, efflorescence, oils and grease.

MIX PREPARATION

LATIFLEX is usually diluted with water depending on the application and the flexibility required. Water should be added before being

mixed with dry cement compounds and inert material.

Usually the LATIFLEX/water ratio most used in preparing cement mortars is 1:3, but in some cases it may be used undiluted to achieve a product with maximum flexibility.

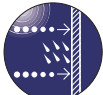
Mix preparation



LATIFLEX

TECHNICAL CHARACTERISTICS

Appearance	liquid
Colour	milky light
Solid residue (DIN 53189)	48%±1
Viscosity	0.2-0.3 Pas
pH	7.5-9
Dispersion density (DIN 51757)	1.04 g/cm ³
Minimum application temperature	0°C
Elongation to break	> 2,500%
Ageing resistance	good
Resistance to light	good
Shelf life in original packaging	12 months



WATERPROOF



WATER-BASED



MINIMUM APPLICATION TEMPERATURE



KEEP AWAY FROM FROST

ADVANTAGES

- Improves the chemical resistance of the mix, making it particularly resistant to the aggressive action of solvents
- Excellent flexibility and adhesion.
- Improves mechanical resistance and resistance to abrasion.
- Reduces the possibility of cracking, even on thin layers.

PRODUCT



PACKAGING

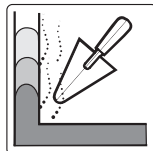
20 kg pails.
5 kg cans.

index
Construction Systems

Via G. Rossini, 22
37060 Castel D'Azzano (VR) - Italy
Tel. 045.8546201 - Fax 045.512444

INTERNET: <http://www.index-spa.com> - E-MAIL: index.export@index-spa.it

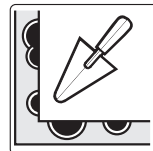
- FOR ANY FURTHER INFORMATION OR ADVICE ON PARTICULAR APPLICATIONS, CONTACT OUR TECHNICAL OFFICE
- IN ORDER TO CORRECTLY USE OUR PRODUCTS, REFER TO INDEX TECHNICAL SPECIFICATIONS



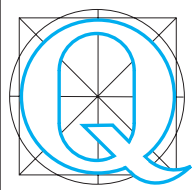
Restoration of damp masonry using damp-proofing renders



Waterproofing with vapour permeable cements



Concrete refurbishment



TOTAL QUALITY
Q.S. ISO 9001

ring the numerous possible uses and the possible interference of conditions or elements beyond our control, we assume no responsibility regarding the results which are obtained. The purchasers, of their own accord and under their own responsibility, must establish the suitability of the product for the envisaged use.

The figures shown are average indicative figures relevant to current production and may be changed or updated by INDEX S.p.A at any time without previous warning. The advice and technical information provided, is what results from our best knowledge regarding the properties and the use of the product. Consider